

# HCL Informix<sup>®</sup>

Fast. Reliable. Scalable.

HCL Informix<sup>®</sup> is a fast, resilient, and scalable database server that manages relational, object-relational, and dimensional databases. Its small footprint and self-managing capabilities are suited to embedded data management solutions.

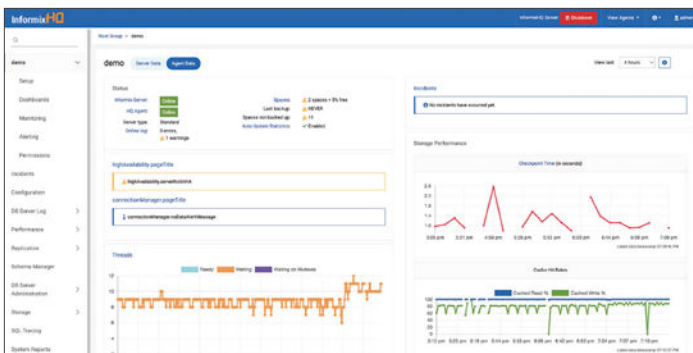
## Effortless Migration

Upgrade to HCL Informix 14.10 in just a few easy steps. Receive maintenance and support with greater than 95% customer satisfaction from Actian's team of tenured data experts.

When you're ready to migrate to the cloud, you can deploy HCL Informix in Virtual Machines (VMs) or in Docker or Kubernetes supported containers at no extra cost.

## Simple Administration

The Informix HQ administrative console, shown below, includes a centralized dashboard that makes it easy to visualize, monitor and manage database server instances. Metrics help you diagnose and resolve issues quickly.



Informix HQ Administrative Console

## High Performance

HCL Informix is designed to deliver high performance to thousands of users. Compression, columnar-based storage and accessing data in-memory speed up query performance by significantly reducing I/O during query execution.

HCL Informix Warehouse Accelerator (IWA) enables you to configure in-memory query acceleration for complex data warehouse and operational queries without application changes or tuning. Key features include:

- In-memory data storage and query processing
- Increased query speed on SQL, NoSQL, and sensor data
- Intelligent frequency partitioning
- Massively parallel processing (MPP) of data load, refresh, and query

## Resiliency

High availability, enterprise replication, and sharding provide an effective, flexible, and efficient way to maximize data availability, and ensure disaster recovery, and consistent delivery of data wherever and whenever users need it.

## Enterprise Scale

Servers scale flexibly and dynamically balance workloads to ensure optimal use of resources. Scalability options include:

- Periodically increasing capacity by adding a remote stand-alone secondary server
- Geographically dispersing processing and increasing capacity using a network of enterprise replication servers
- Balancing workload to optimize resource usage.

## Benefits

### Strong Data Security

- Data encryption at rest and in motion
- Support for up to version 1.3 of Transport Layer Security (TLS)
- Secure connections
- User privilege and user access controls
- Data security auditing
- Remote key management

### Multi-model Versatility

- Use time-series, spatial, NoSQL, SQL and JSON data in the same database, in the same queries.
- Time-series capability reduces storage, ensures high performance, and provides a wide range of analytics.

### High-Volume Data Streaming

- Ingest and store petabytes of sensor data and other IoT information to support edge and cloud analytics.

### Flexible Deployment

- On-Premises
- AWS
- Microsoft Azure
- Google Cloud
- Available on AWS and Microsoft Azure Marketplaces

### Choice of Platforms

- Linux 86-64
- Linux on POWER Little Endian AIX
- Windows
- Solaris Sparc

### Fast Data Access

- REST, MongoDB, and SQL APIs
- Python and Grafana
- MQTT

## Embedded Database Management

HCL Informix's footprint can be as little as 100 MB. This and its ability to run on self-managed distributed devices that are self-healing, self-optimizing and self-adjusting make it the perfect choice for embedded data management.

## Trusted and Supported

Technology trusted by thousands of companies around the globe every day to run their mission critical applications. These include enterprise customers in financial services, insurance, logistics, gaming and some of the world's largest retail businesses.

## Expert Services

Our Professional Services team helps implement digital transformation using HCL Informix. We collaborate with your team to ensure seamless migration. Ongoing database administration and maintenance services are available as part of our premium advisory service packages.

## About Actian

Actian makes data easy. We deliver cloud, hybrid cloud, and on-premises data solutions that simplify how people connect, manage, and analyze data. We transform business by enabling customers to make confident, data-driven decisions that accelerate their organization's growth. Our data platform integrates seamlessly, performs reliably, and delivers at industry-leading speeds. Learn more about Actian, a division of HCLSoftware: [www.actian.com](http://www.actian.com).

